

Danish Dairy Industry

Facts and figures on Danish milk production

Updated August 2019

Noget at leve af. Noget at leve for.

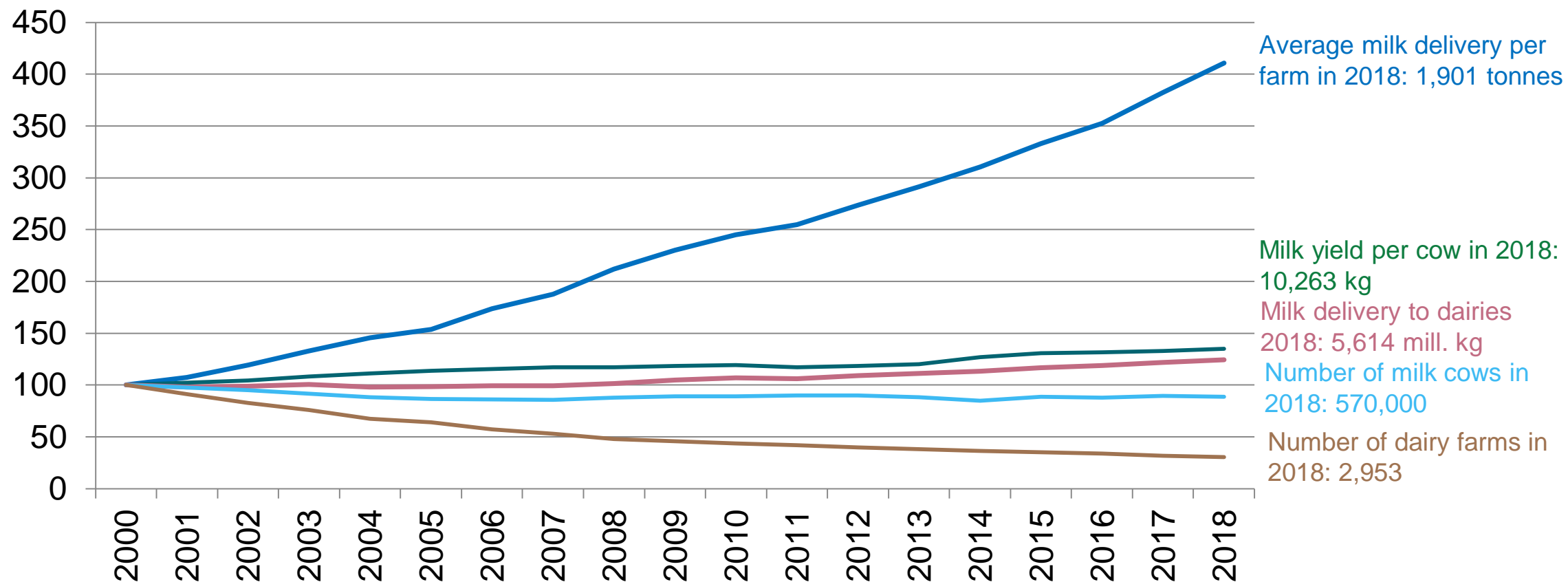


Euroopa Maaelu Are
Põllumajandusfon
Euroopa investeerin
maapiirkondades.



Development in structure in Denmark

year 2000 = index 100

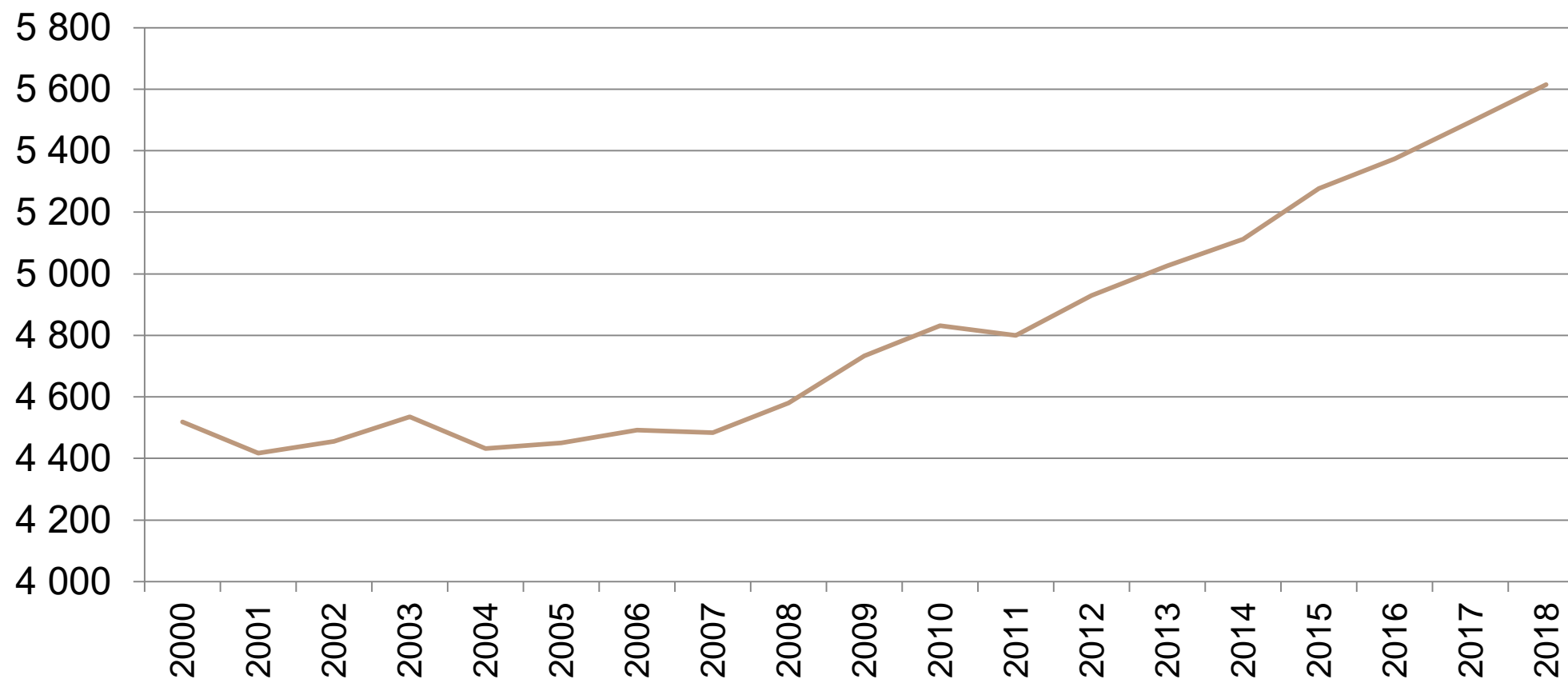


Noget at leve af. Noget at leve for.



Whole milk deliveries from Danish producers

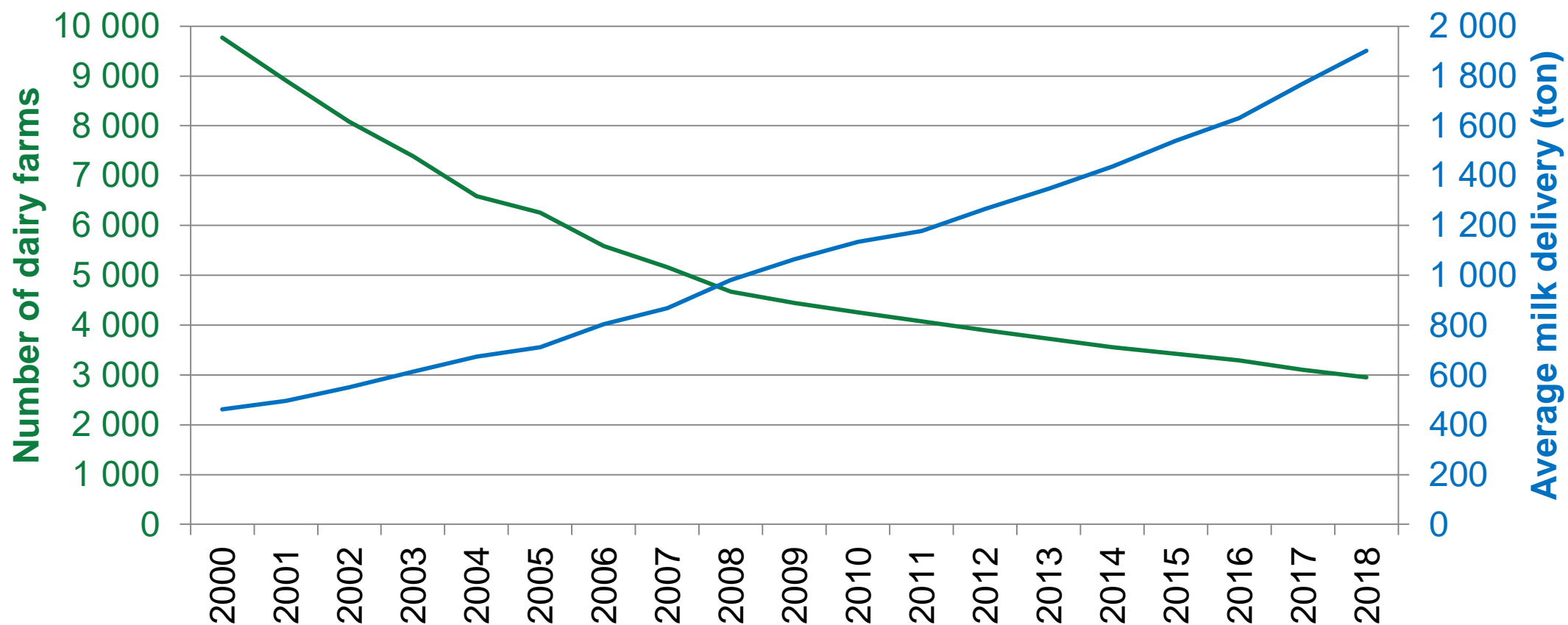
1,000 tonnes



Noget at leve af. Noget at leve for.



Number of dairy farms and average milk delivery per farm

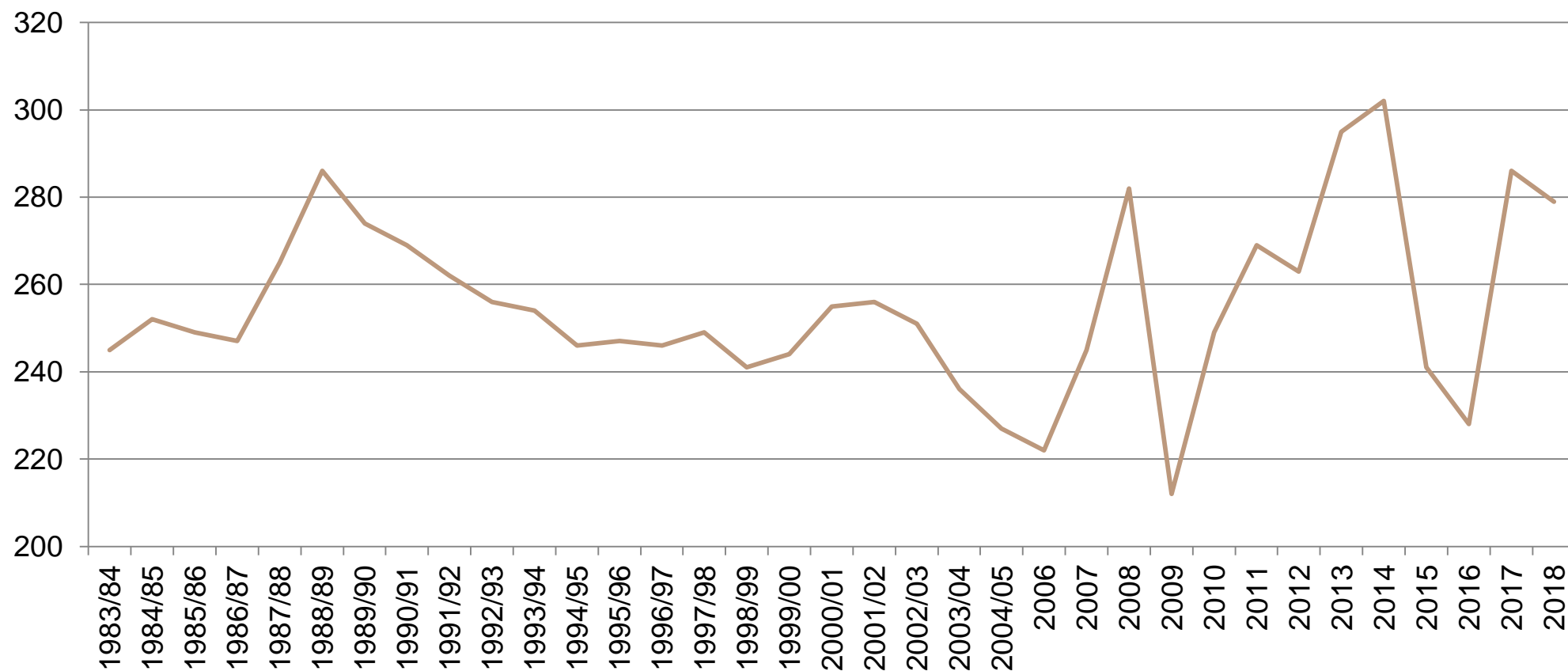


Noget at leve af. Noget at leve for.



Milk price ex. farm

DKK per 100 kg (4.20% fat og 3.40% protein)

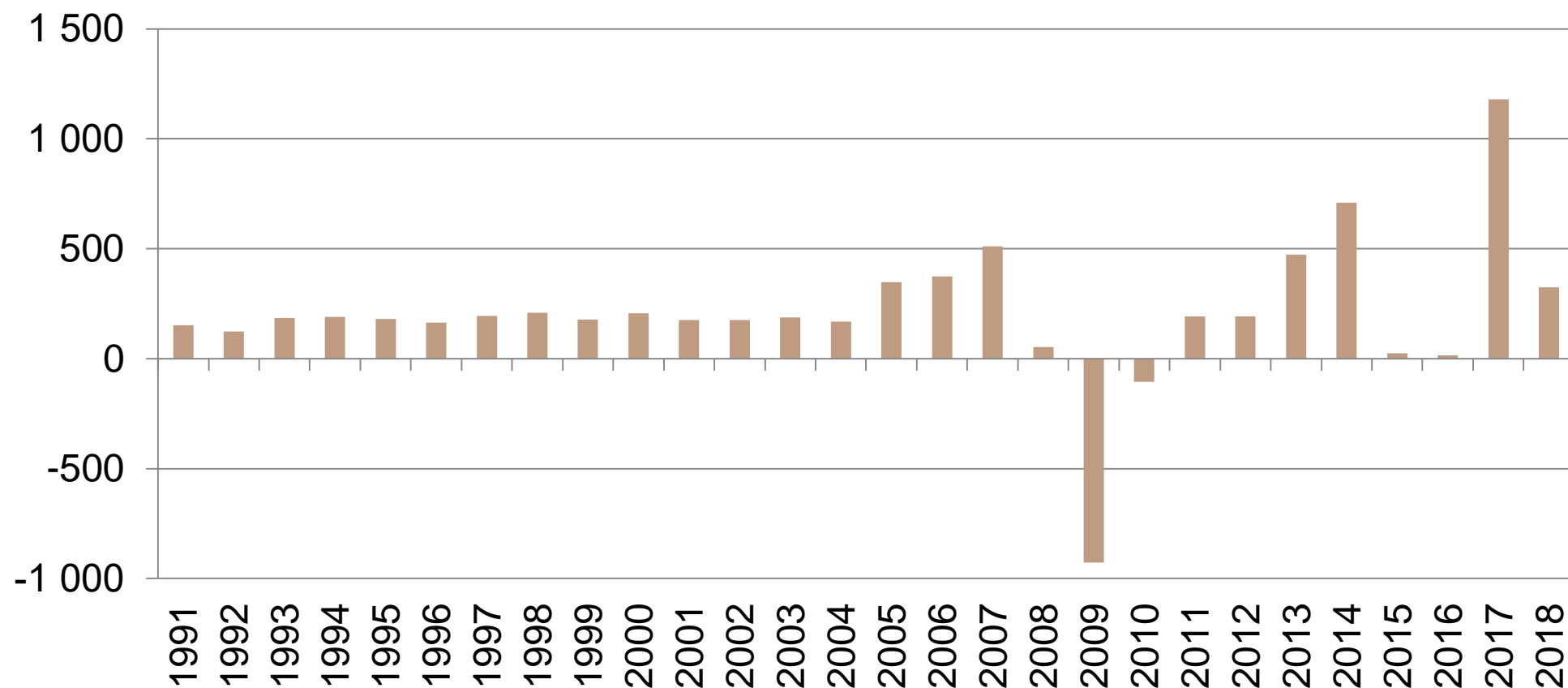


Noget at leve af. Noget at leve for.



Farm efficiency – from milk producing holdings

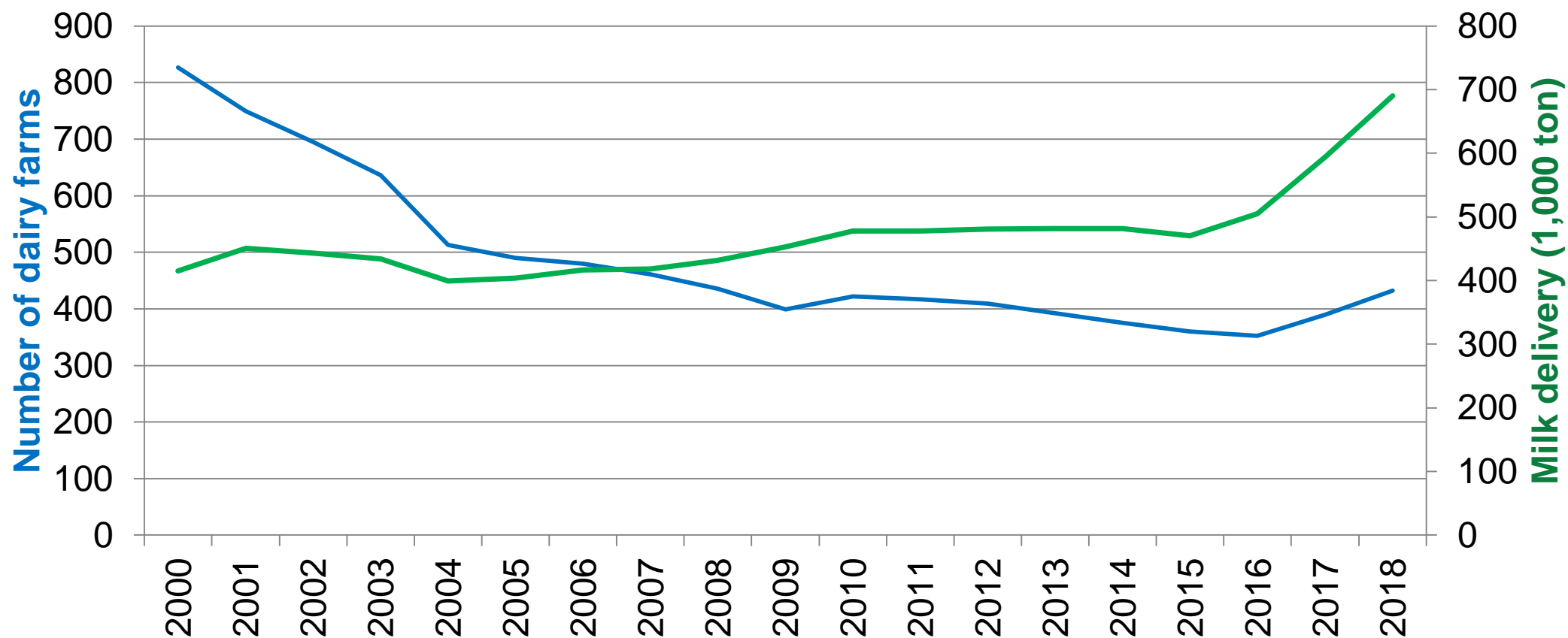
1,000 DKK



Noget at leve af. Noget at leve for.



Organic milk delivery and number of producers



Noget at leve af. Noget at leve for.



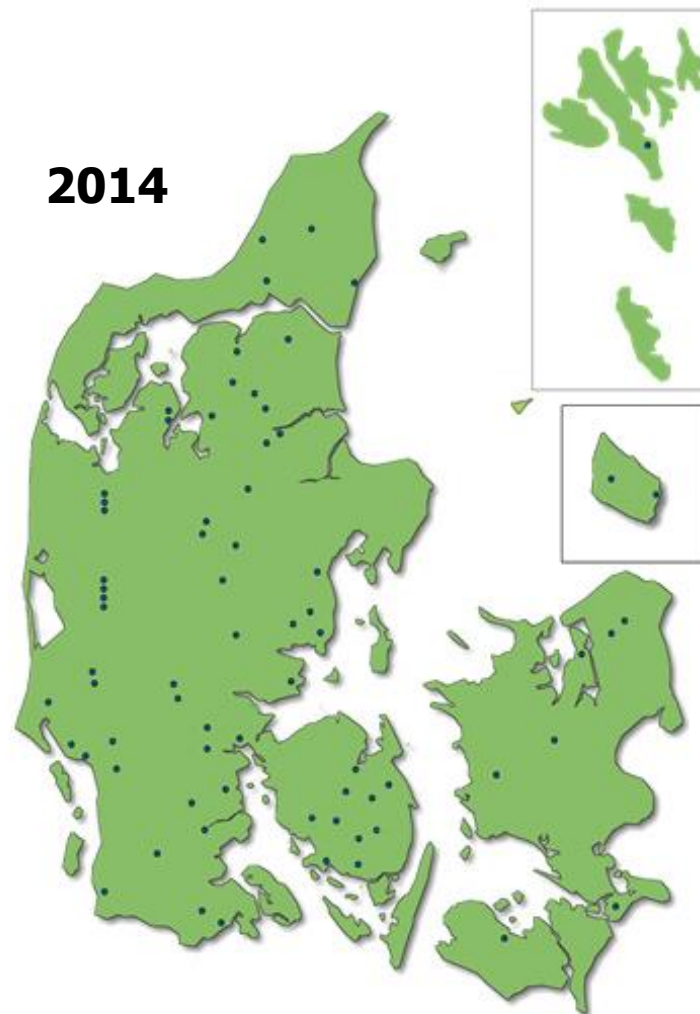
Structural dairy development

	1960	1970	1980	1990	2000	2010	2017	2018
Cooperatives	1.135	410	154	27	14	10	9	8
Private dairies	204	114	72	41	31	22	18	18
Dairies in total	1.339	524	226	68	45	32	27	26
Milk delivery (mio. kg)	4.999	4.273	4.917	4.542	4.519	4.831	5.494	5.614

Noget at leve af. Noget at leve for.



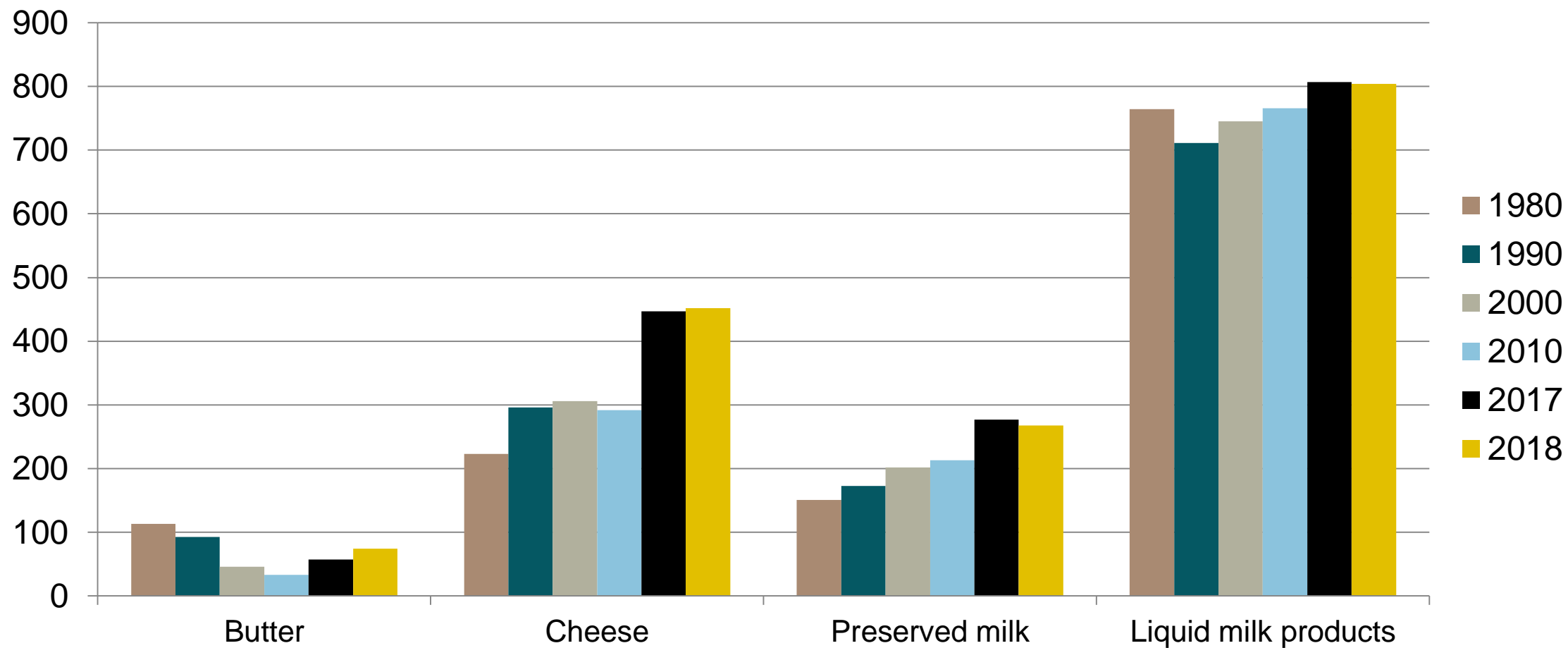
Dairy plants in Denmark



Noget at leve af. Noget at leve for.

Production of dairy products

1,000 ton

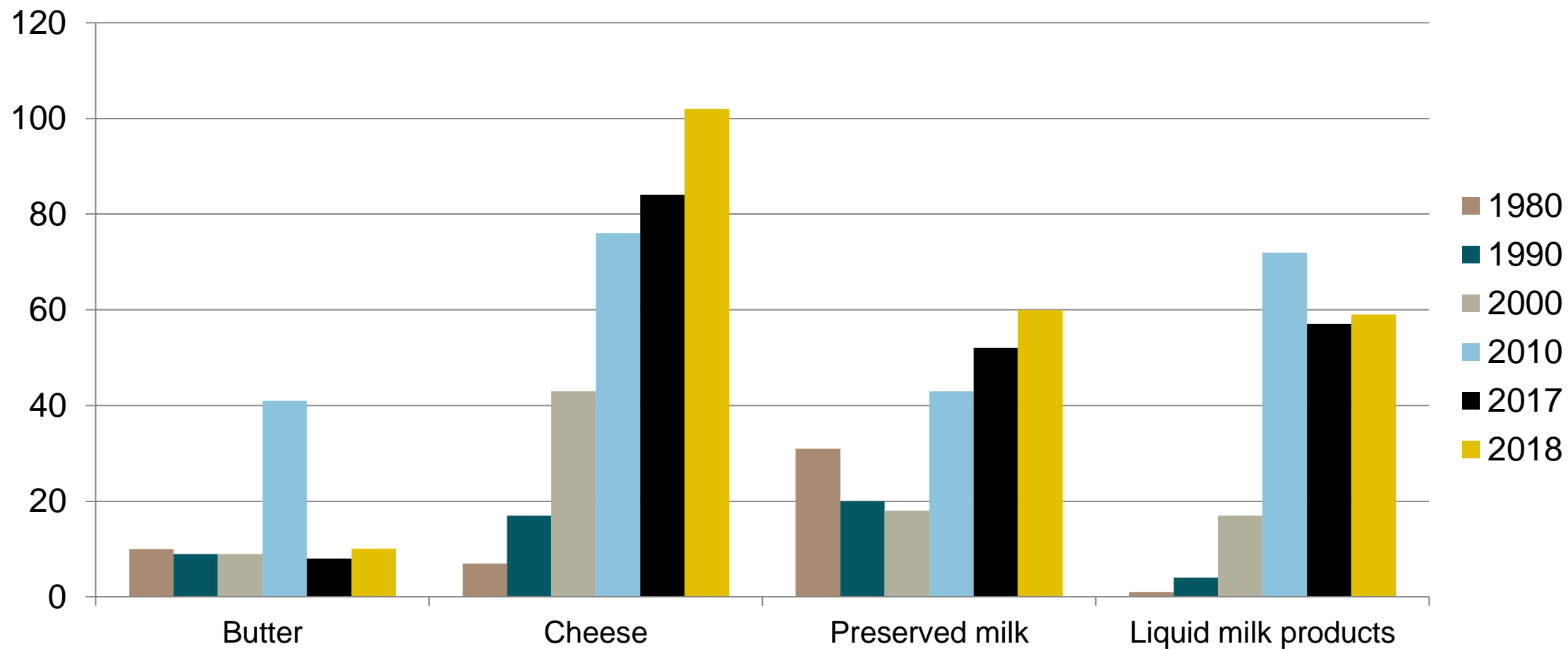


Noget at leve af. Noget at leve for.



Import of dairy products

1,000 ton

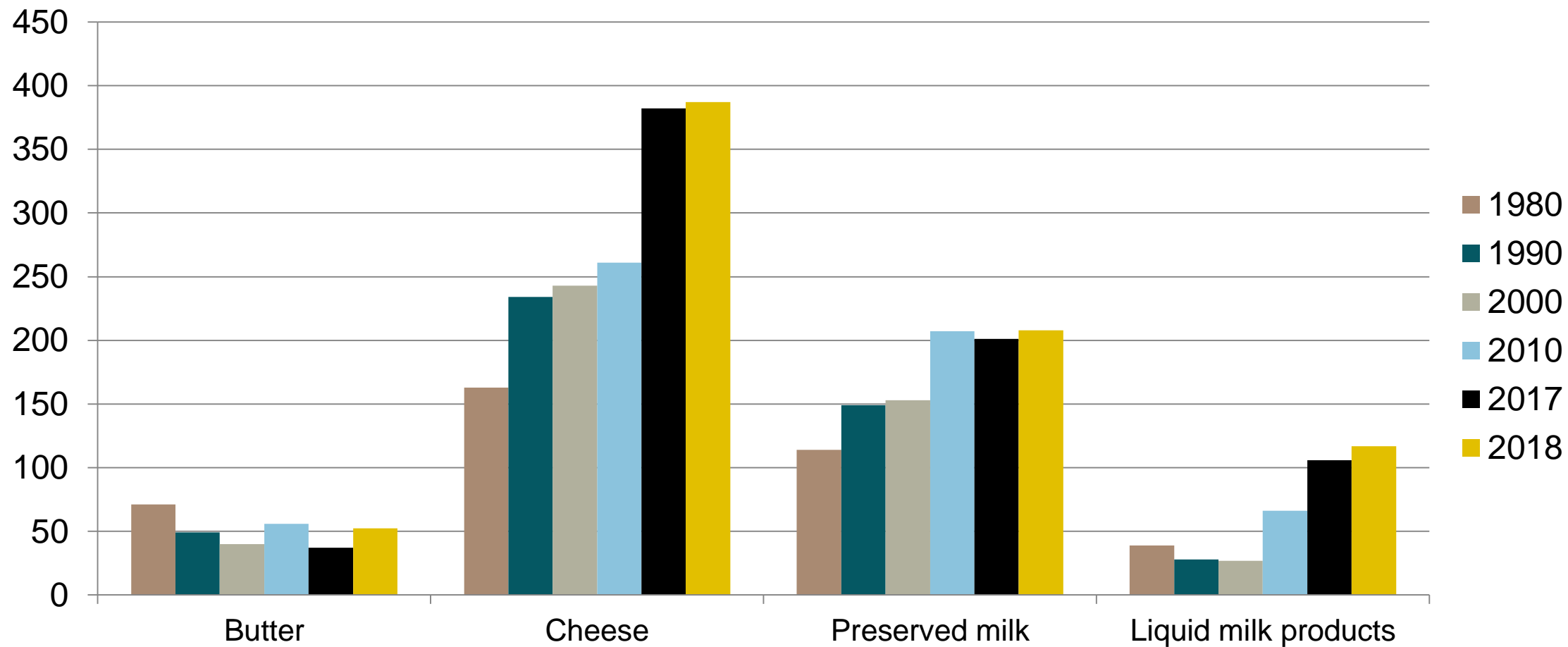


Noget at leve af. Noget at leve for.



Export of dairy products

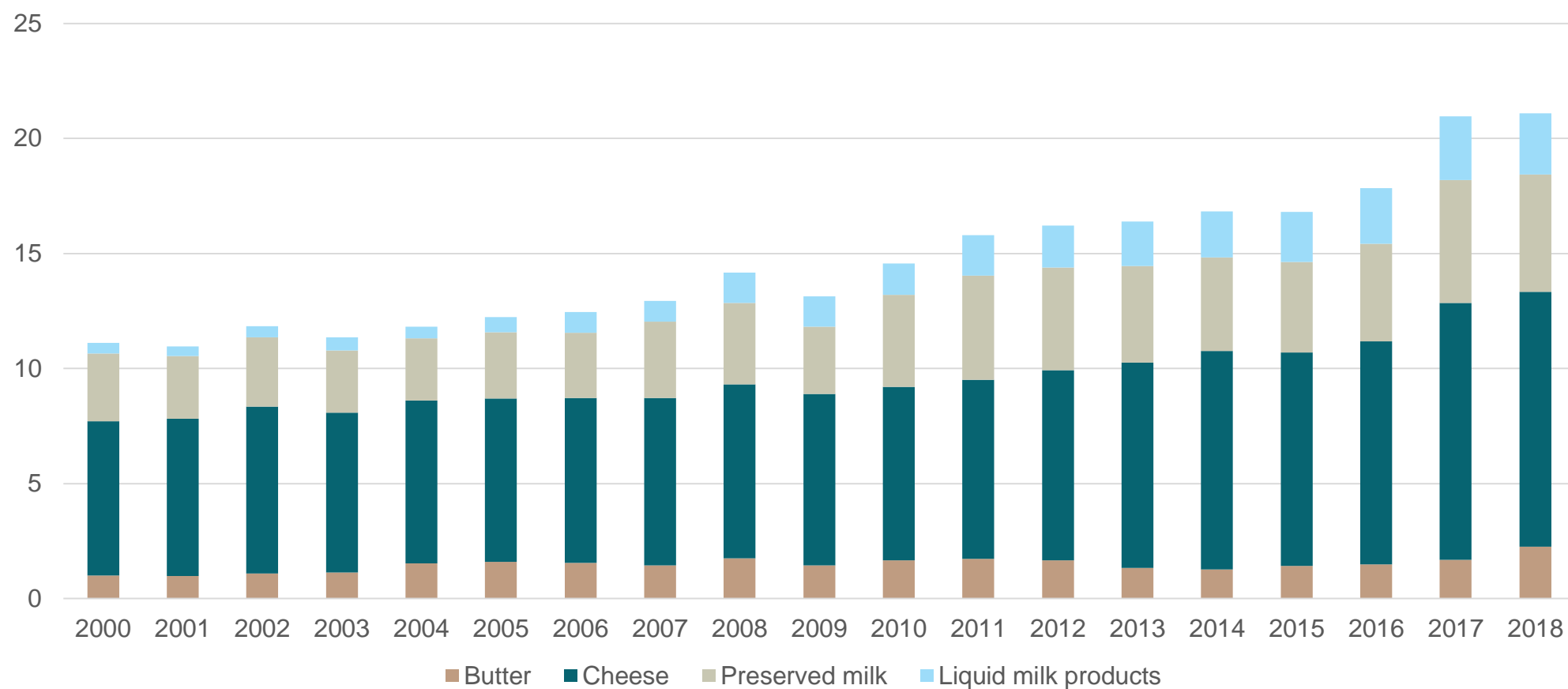
1,000 ton



Noget at leve af. Noget at leve for.



Export value of dairy products (bn. DKK)

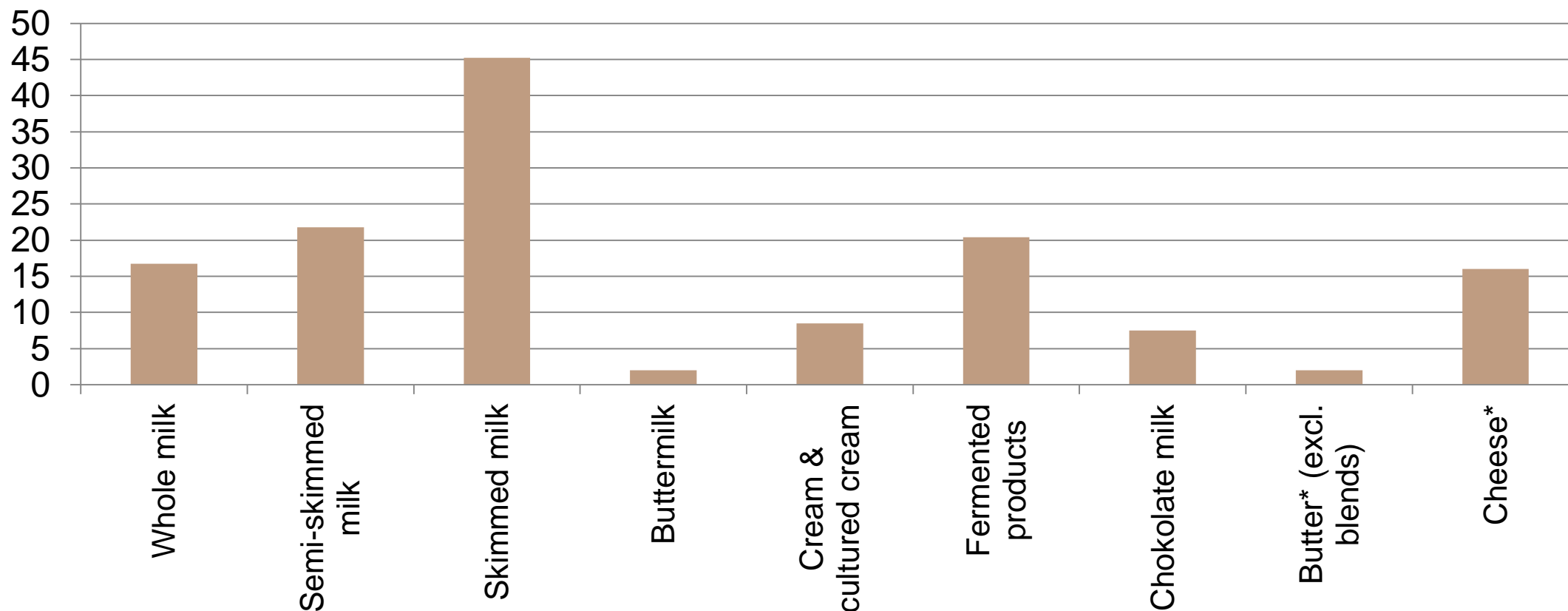


Noget at leve af. Noget at leve for.



Consumption of dairy products in 2018

Kg per capita



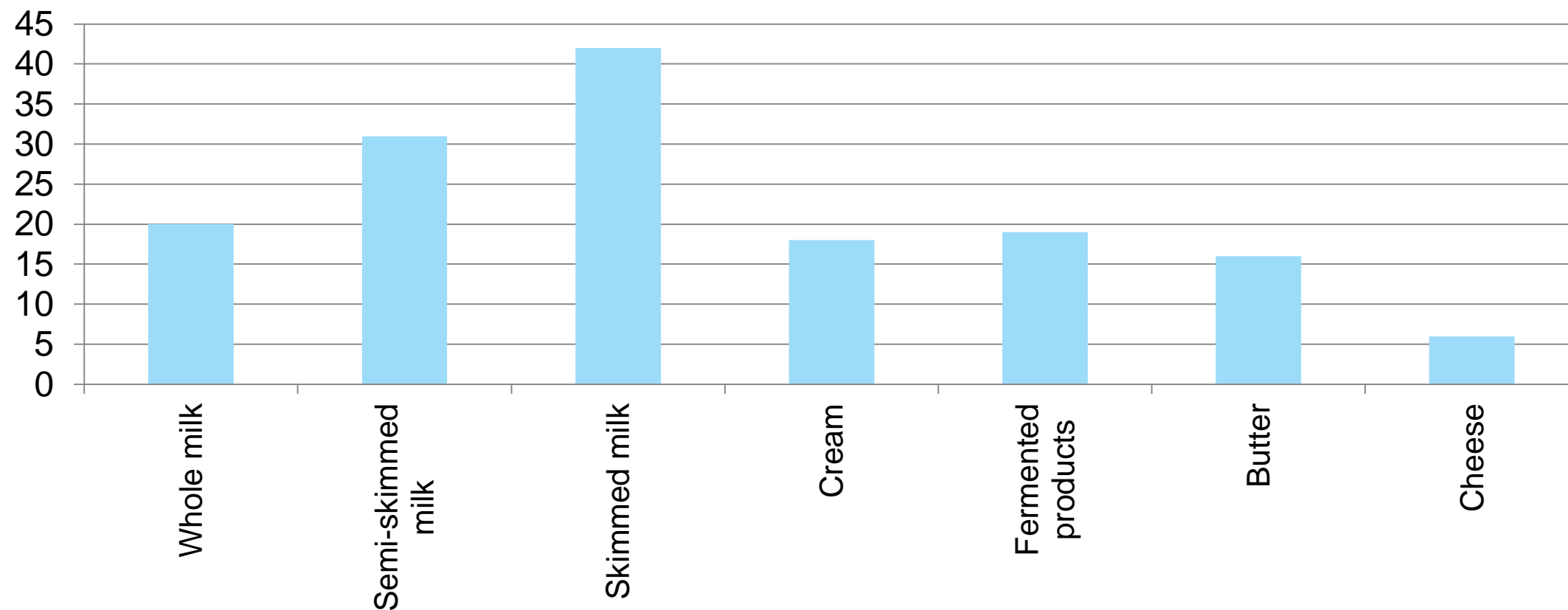
* estimated

Noget at leve af. Noget at leve for.



Organic sales in 2018

in percent



Noget at leve af. Noget at leve for.



Danish Dairy Board members

Cooperatives

- Arla Foods Amba
- Thise Mejeri Amba
- Them Andelsmejeri
- Bornholms Andelsmejeri
- Rørbæk Andelsmejeri
- Naturmælk Amba
- Asaa Andelsmejeri
- Bjerre Herreds Mejeriselskab
- MBM, Færøerne

Private companies

- Mammen Mejerierne A/S
- Nørup Mejeri
- Nørager Mejeri A/S
- Løgismose Mejeri A/S
- Sønderhaven Gårdmejeri
- Aabybro Mejeri
- Uhrenholt A/S
- Ullerslev Mejeri
- Sømælk
- Jernved Mejeri
- Ingstrup Mejeri
- Lactosan A/S
- Cremo Ingredients (Kerry)
- Lindved Mejeri
- Kirkeby & Thrane
- Fayrefield Foods
- Kirkeby Cheese Exports A/S
- JBJ Ost
- Sonlac A/S
- Mille Food A/S
- Gundestrup Mejeri & Bryghus
- Ostebørsens Gårdmejeri

Non-members of the Danish Dairy Board

- Osterhusumer Molkerei
- Vest Mælk
- Elmegaard Mejeri
- Enghavegård Osteri
- Tebstrup Gedeosteri
- Gedsted Mejeri
- Hansen Flødeis
- Skee Ismejeri
- Svaneke Ismejeri
- Vebbestrup Flødeis
- Brandbjerg Gårdmejeri
- Humlebæk Mikro Mejeri
- Hårbølle Mejeri og Osteri
- La Treccia
- Mejerigaarden A/S
- Sondrup Gårdmejeri, Øko Ged & Grønt

Noget at leve af. Noget at leve for.

