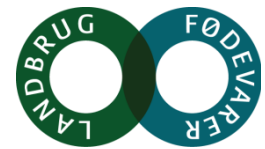


# Danish Dairy Industry

Introduction to the Danish Dairy Board and the Danish Agriculture & Food Council

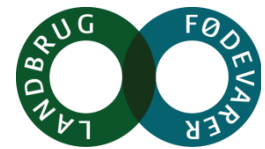




# The Danish Dairy Board

## History and status

- Trade association for 32 Danish dairies
- Existed since 1912, where the Danish Dairy Federation was founded. The name is changed to the Danish Dairy Board in 1997
- In 2009, joined the cooperation in the Danish Agriculture & Food Council, which today solves the majority of all sector tasks
- After the affiliation to the Danish Agriculture & Food Council, 17 employees are responsible for the administration of the school milk program, generic campaigns (Milk for life, Cheese & Cow etc.) and financial administration.



# The Danish Dairy Board

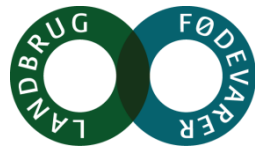
## Board of Directors

Superior management – approx. four meetings a year

Composition:

- Four from Arla Foods
- One from other small cooperatives
- One from private dairies

# The Danish Dairy Board versus The Dairy Committee

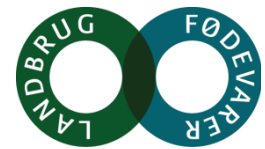


## *The Danish Dairy Board*

- Decides and approves the statutes of the Dairy Committee
- Appoints members of the Dairy Committee for two years at a time at the ordinary general assembly

## *The Dairy Committee*

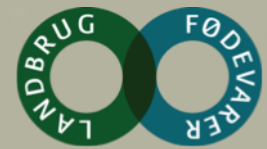
- Initiates activities and political issues and recommends tasks to be solved by the Danish Agriculture & Food Council
- Recommends the budget for approval by the Danish Dairy Board.



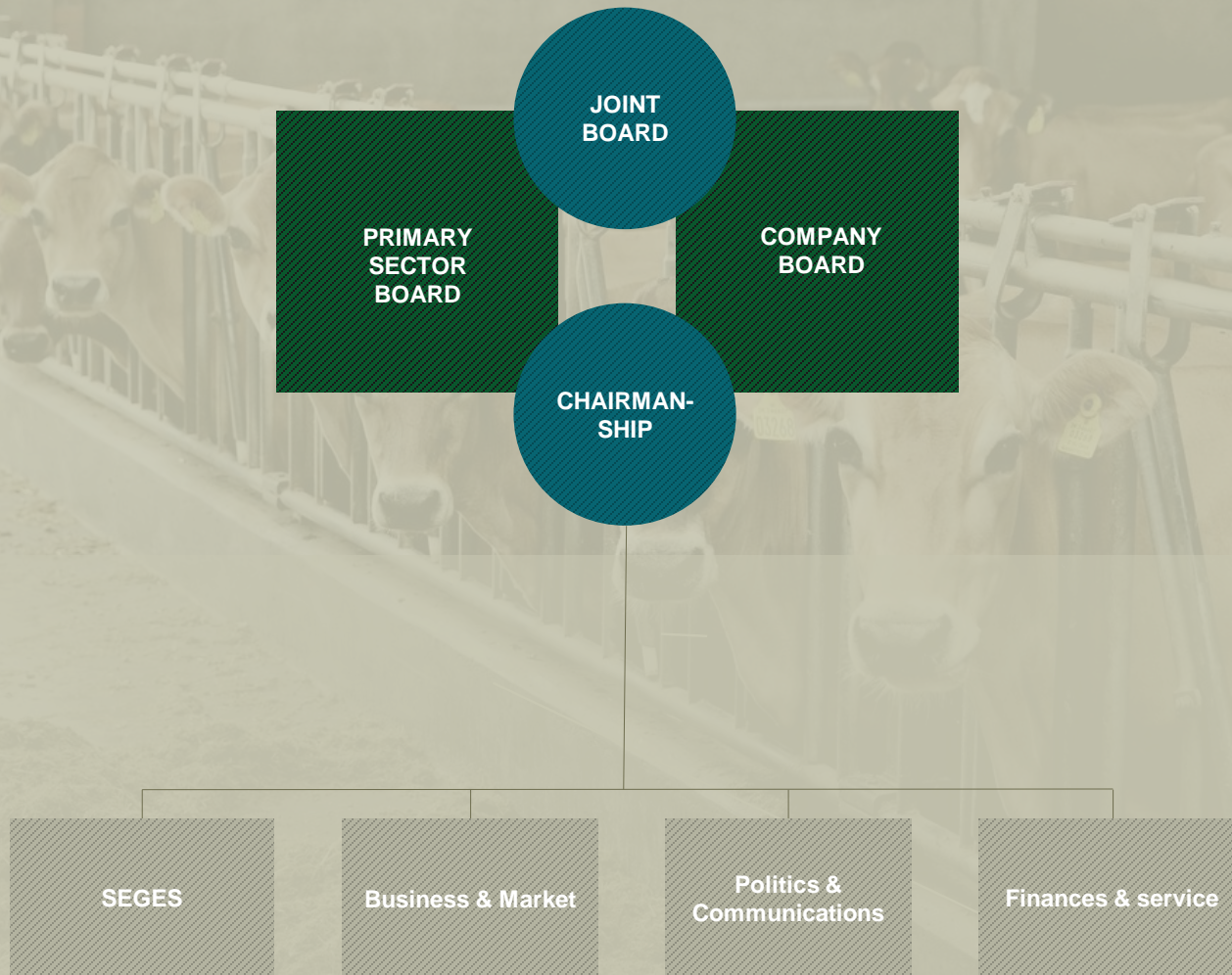
# The Dairy Committee

## 14 members - composition:

Arla Foods	7
Other cooperatives	2
Private dairies	2
Organic dairies	1
The Ass. Of Danish Cheese and Butter	1
The managing director of the Danish Dairy Board	1

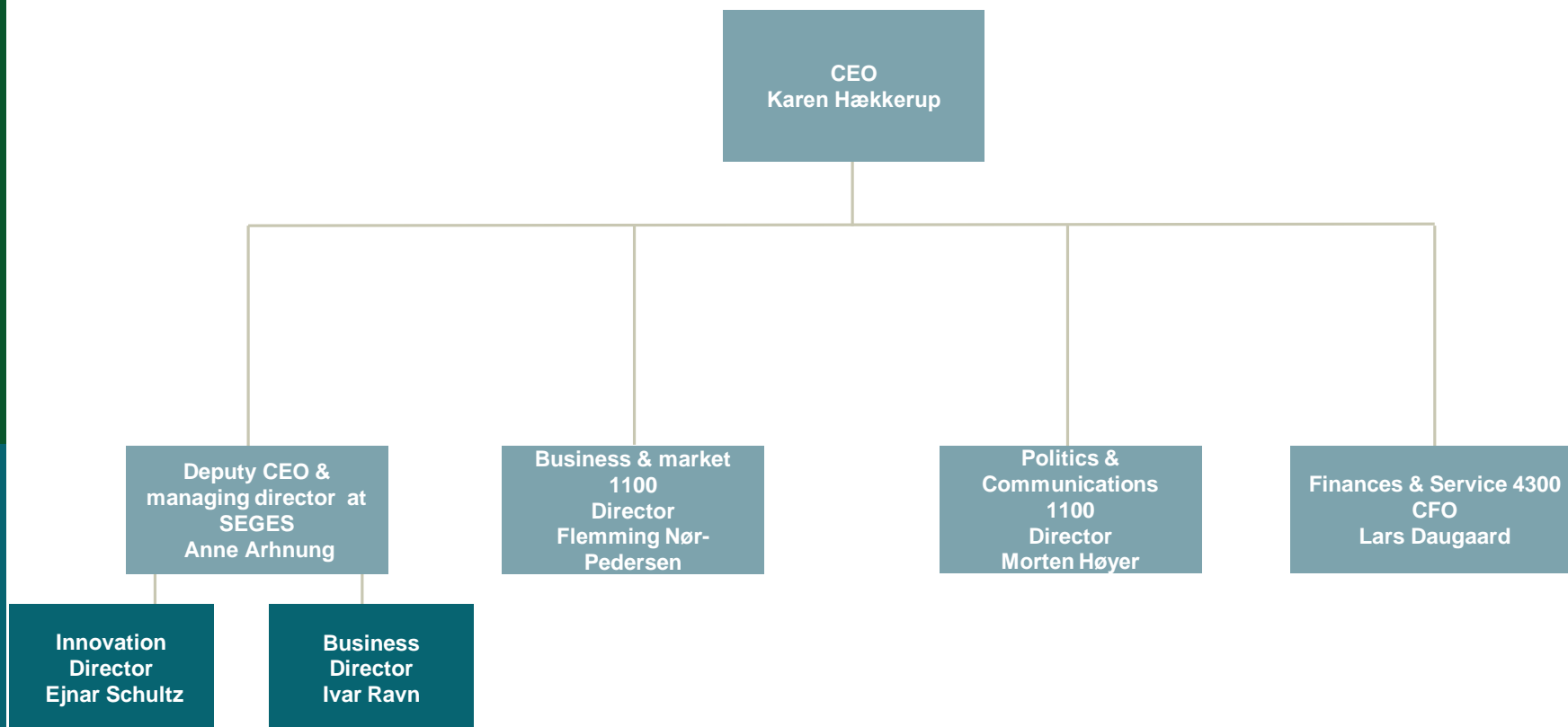


# Danish Agriculture & Food Council





# Danish Agriculture & Food Council

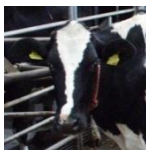


Noget at leve af. Noget at leve for.



# The boards of the Danish Agriculture & Food Council

## Primary Sector Board



## Company Board



### Joint chairmanship

- 26 members
- Makes decisions within their area

- 31 members
- Makes decisions within their area

**Common Board** (supplemented with a few other members)



# Different roles

